

Marching Band Warm-Ups

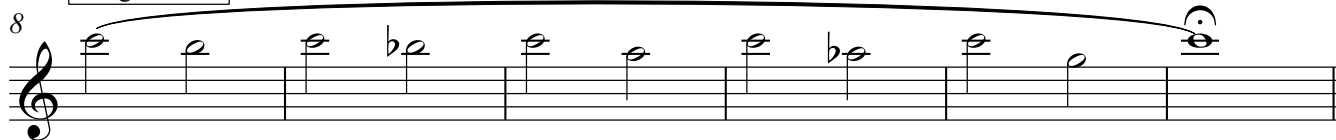
Clarinet in B \flat 1

By John McAllister
Adapted by Dr. Selfridge

Long Tones 1



Long Tones 2



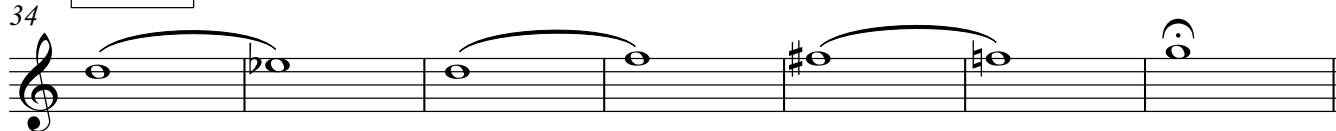
Long Tones 3



Flexibility 1



Chords #1



Articulation Unison



Clarinet in B \flat 1
Marching Band Warm-Ups

2

Articulation Chords

57



61



65

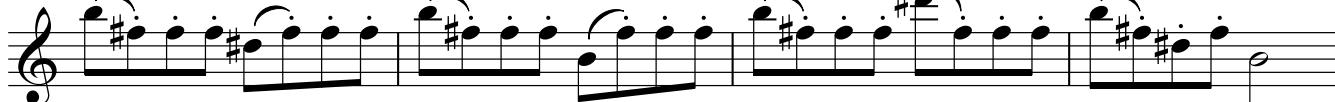


Technique #1

69



73



77



81



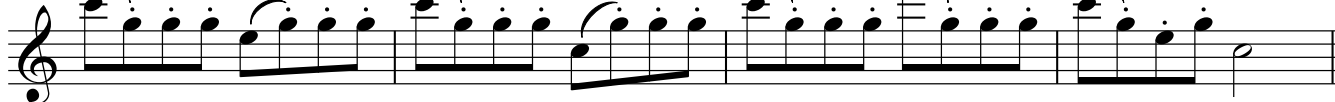
85



89



93



Clarinet in B♭ 1

Technique #2

99

The image shows measures 99 and 100 of a musical score. Measure 99 is a single staff with a treble clef, containing a melodic line with eighth and sixteenth notes, some with accents, and a whole note chord at the end. Measure 100 consists of two staves. The upper staff has a treble clef and contains a melodic line with eighth and sixteenth notes, some with accents, and a whole note chord at the end. The lower staff has a bass clef and contains a bass line with eighth and sixteenth notes, some with accents, and a whole note chord at the end.